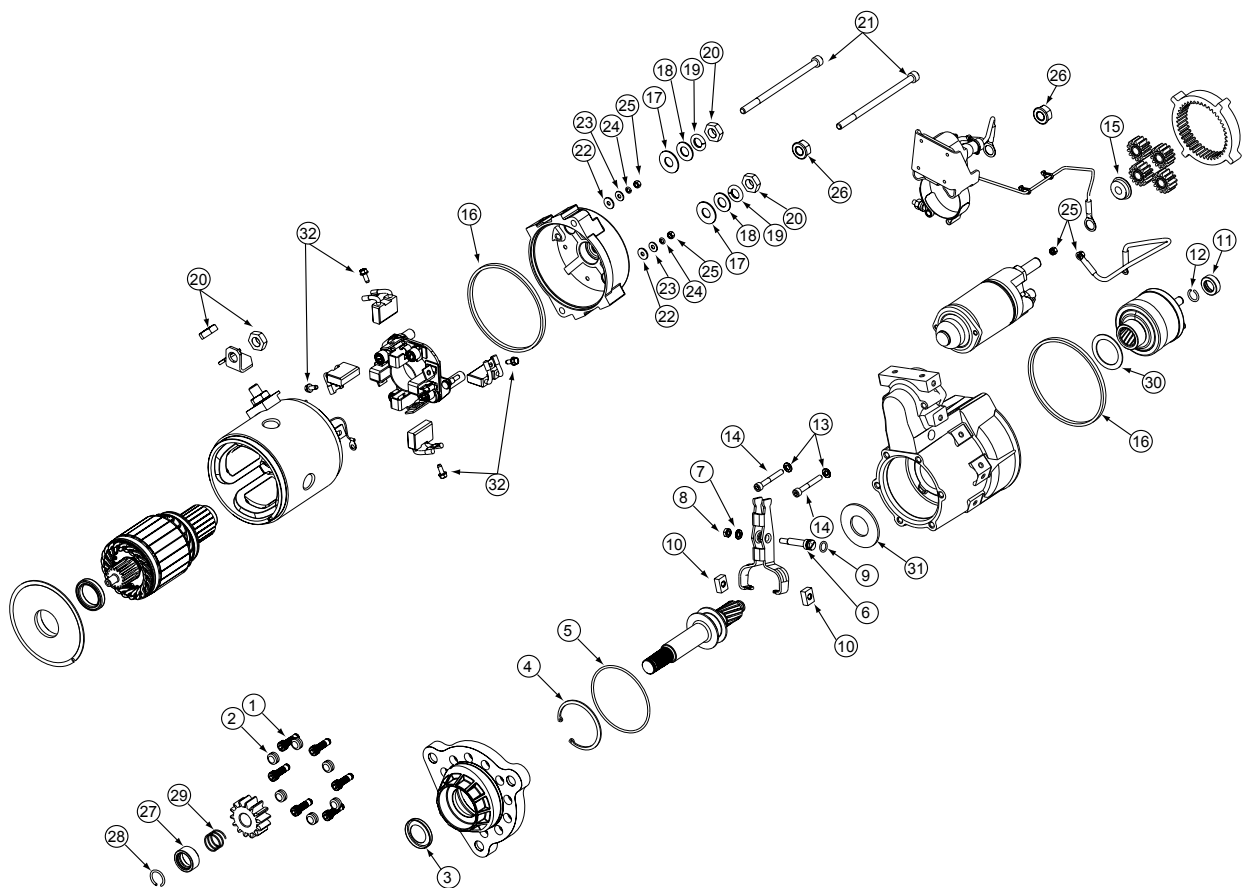


Source: Leece-Neville Heavy Duty Systems Division - Arcade, NY USA
Date: July 7, 2017
Bulletin No: TSB-3023
Models: M125R Noseless Starter Motor
Subject: Hardware kit for M125R Noseless starter motors K2121059755



Important: The information contained in this bulletin is intended for use by trained, professional technicians who have the proper tools, equipment, and training to perform the required maintenance described above. This information is NOT intended for 'do-it-yourselfers'; and you should not assume that this information applies to your equipment. If you have any questions regarding this information please visit our website at www.prestolite.com, or contact our technical service department at:

Date: July 7, 2017

Bulletin No: TSB-3023

Note: All of these components are part of the hardware kit and not available for individual purchase.

| Description | QTY | Key | Where used |
|--------------------|-----|-----|----------------------------------|
| SCREW 5/16-18 | 6 | 1 | Mounts flange to shift hsg |
| PLUG, SEALING | 6 | 2 | Flange sealing plug |
| Seal Flange Hsg | 1 | 3 | Flange hsg seal |
| Retaining Ring | 1 | 4 | Flange bearing retaining ring |
| O-ring | 1 | 5 | Flange O-ring |
| Pivot Bolt | 1 | 6 | Shift lever bolt |
| Washer, lock | 1 | 7 | Shift lever bolt lock washer |
| Nut, M6 | 1 | 8 | Shift lever bolt nut |
| O-ring | 1 | 9 | Shift lever bolt o-ring |
| Cam, Lever Arm | 2 | 10 | Shift Lever Cams |
| Retainer, Drive | 1 | 11 | Drive Retainer |
| Snap Ring | 1 | 12 | Drive Retainer Snap Ring |
| M6 Lockwasher | 2 | 13 | Solenoid mtn hardware |
| Screw M6 | 2 | 14 | Solenoid mtn hardware |
| Thrust Spacer | 1 | 15 | Gear Box Spacer |
| Rubber Seal | 2 | 16 | Field & Frame Seal |
| Washer, Insulating | 2 | 17 | Negative insulating washer |
| Plain Washer 1/2 | 2 | 18 | Negative hardware |
| Washer, Lock 1/2 | 2 | 19 | Negative hardware |
| Nut 1/2 Jam | 4 | 20 | Negative/ Motor Strap Hardware |
| Bolt | 2 | 21 | Through Bolts |
| Washer, Insulating | 2 | 22 | Brush holder attachment hardware |
| Washer #10 | 2 | 23 | Brush holder attachment hardware |
| Washer, Lock #10 | 4 | 24 | Brush holder attachment hardware |
| Nut hex, M5 | 4 | 25 | Brush holder attachment hardware |
| Nut, 1/2 Flange | 2 | 26 | Pos & Neg Nuts |
| Pinion Retainer | 1 | 27 | Holds pinion to shaft |
| Snap Ring | 1 | 28 | Holds pinion to shaft |
| Engagement Spring | 1 | 29 | Pinion Spring |
| Thrust Washer | 1 | 30 | Clutch thrust washer |
| Brake Washer | 1 | 31 | Clutch brake washer |
| Screw M5 | 4 | 32 | Brush Screws |

Important: The information contained in this bulletin is intended for use by trained, professional technicians who have the proper tools, equipment, and training to perform the required maintenance described above. This information is NOT intended for 'do-it-yourselfers', and you should not assume that this information applies to your equipment. If you have any questions regarding this information please visit our website at www.prestolite.com, or contact our technical service department at: